



EWP PRO ADVANTAGE



**LSL Wall Framing
Now Available!**

*Eastern Canada only



NOT JUST WOOD

We don't just sell wood, we sell solutions.
Every home needs a good foundation.

Gillfor's EWP Advantage program offers a complete solution that addresses a variety of needs.

Program Benefits

- » Special Bid Pricing
- » Program Pricing
- » Engineering and Design Support
- » Training Events
- » Staff Training
- » Software Integration
- » Order Communication
- » Repairs and Warranty Issues
- » Product and Marketing Support



CALL YOUR GILLFOR ACCOUNT MANAGER FOR MORE DETAILS

PROGRAM DETAILS

- Program Pricing
 - » Volume direct loads
 - » Yard LTL + job packages
 - » Special bid pricing is available
- Engineering and Design Support
 - » Our EWP Technical Department is available to support floor plan designs including engineering
- Training Events
 - » Intro to EWP 101 and Advanced Technical Training are available upon request
- Staff Training
 - » EWP Technical Advisor and your Account Manager are readily available to provide tech support, and product knowledge when required
- Software Integration
 - » Our technical services team has expertise in CSD Istruct floor design platforms to ensure our customers get all the efficiencies they have to offer
- Order Communication
 - » Dedicated Account Manager to ensure regular updates on ETAs and deliveries including changes
- Repairs and Warranty Issues
 - » We work directly with our vendors to handle installation and warranty issues in a timely manner
- Product and Marketing Support
 - » Technical and installation manuals
 - » Sales brochures and product store displays





TRUE. TRUSTED. TOLKO.

WALL FRAMING CREATES THE OVERALL STRUCTURE OF A HOME AND IS THE BASIS FOR A SUCCESSFUL BUILD.

T-TEC LSL Wall Framing and Studs resist twist, warping, and shrinkage. This makes T-TEC the ideal choice for framing areas that require perfectly straight walls such as kitchens, bathrooms, staircases, and tall walls. When you use T-TEC LSL you can be confident that your walls will be consistent and true. Large tiles and cabinets can be installed on T-TEC LSL framed wall without the worry of cracking or shimming that accompanies typical lumber.

Features and Benefits

- » Uniform dimensions along the entire length of the structural member
- » Consistent density and moisture content
- » Available in PET lengths for quick framing
- » Superior resistance to warping, twisting and shrinkage
- » Long lengths to accommodate tall wall conditions
- » APA mark, APA PRL284 and ICC-ESR-2725
- » Transferable 50-year warranty





STOCKING PROGRAM

PRE-CUT STUDS

SKU#	Part Number	Lift Size
LSL24PR	LSL 2X 4X 92 5/8" 1.35E	104
LSL249PR	LSL 2X 4X 104 5/8" 1.35E	104
LSL24116	LSL 2X 4X 116 5/8" 1.35E	104
LSL26PR	LSL 2X 6X 92 5/8" 1.35E	64
LSL269PR	LSL 2X 6X 104 5/8" 1.35E	64
LSL26116	LSL 2X 6X 116 5/8" 1.35E	64

WALL FRAMING

SKU#	Part Number	Lift Size
LSL2612	LSL 2X 6X12 1.35E	64
LSL2616	LSL 2X 6X16 1.35E	64
LSL2618	LSL 2X 6X18 1.35E	64
LSL2620	LSL 2X 6X20 1.35E	64
LSL2624	LSL 2X 6X24 1.35E	64
LSL2820	LSL 2X 8X20 1.35E	48
LSL2824	LSL 2X 8X24 1.35E	48

ENGINEERED WOOD SOLUTIONS



Economy Floor

Entry Level Track Builders
Budget Friendly Option
Price Conscious



Quality Floor

Mid-High Level
Track Builder
Custom Home Builder
Private Build



QualityPLUS Floor

High Level Track Builder
Custom Home Builder
Private Build
Performance Conscious

Components

I-Joist	X	X	X
LVL	X	X	X
Rimboard	X	X	X
Hangers		X	X
LSL			X

Advantages

Vibration	99% or better	87% or better	87% or better
I-Joist	Basic Joist System	Upgraded joist system	Upgraded joist system
LSL	N/A	N/A	Installed in kitchen, bathroom, hallway or tall wall
Tech Services	Design Service	Assigned tech support person	Assigned tech support person, assigned tech sales rep



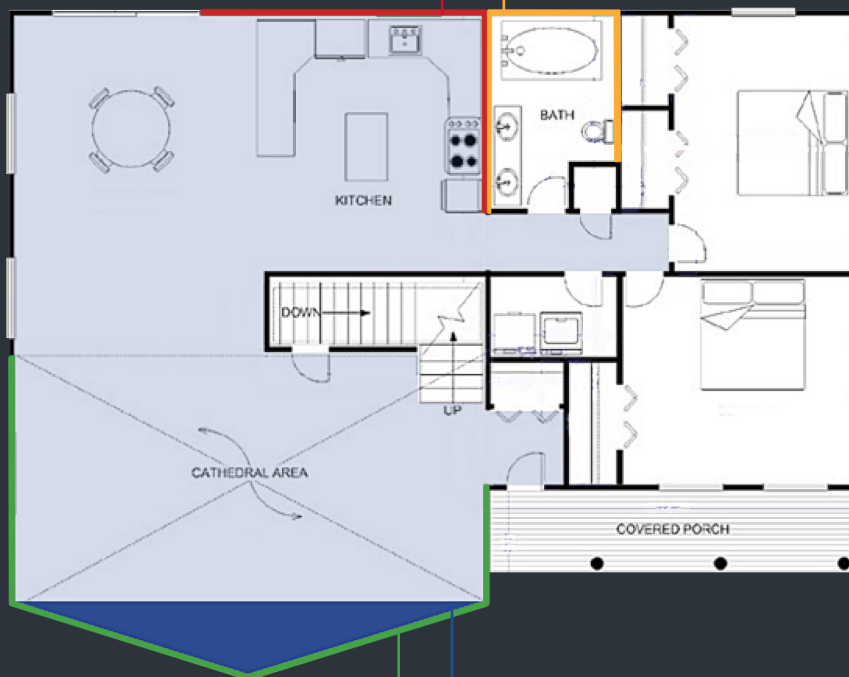
QualityPLUS Floor

LSL STUDS IN THE KITCHEN

- » Cabinets and counter-tops are easier to install
- » Straighter than traditional lumber
- » Straighter walls mean less need to scribe or shim cabinetry
- » Tile back-splash and gypsum less likely to crack
- » Significantly reduces screw “pops”

LSL STUDS IN THE BATHROOM

- » Cabinets and counter-tops are easier to install
- » Straighter than traditional lumber
- » Tile and gypsum less likely to crack
- » Significantly reduces screw “pops”



LSL TALL WALL ADVANTAGE

- » Up to 24' in length
- » Easier installation with continuous 2-story construction
- » Straight throughout length
- » Engineered for project
- » Significantly reduces screw “pops”

QUALITY I-JOIST FLOOR

- » Easier installation (for everyone) -true and straight - no twisting, bowing, checking or splitting
- » Stiffer floor to help reduce squeaking
- » Less vibration and rattling of cabinetry, dishes etc.

Product Distributed in Eastern Canada

P3 JOIST



INTERFOR P3 JOIST™
PJ40 and PJ80 series



West Fraser

WEST FRASER LVL 2.0E
7 1/4" to 24"

TOLKO TTEC

LSL PRODUCTS

TOLKO TTEC™ LSL
1.35E Precut and
Wall Framing Studs

**CALL YOUR GILLFOR ACCOUNT
MANAGER FOR ALL YOUR SALES
AND FLOOR DESIGN NEEDS.**

»»» Gillfor.com

